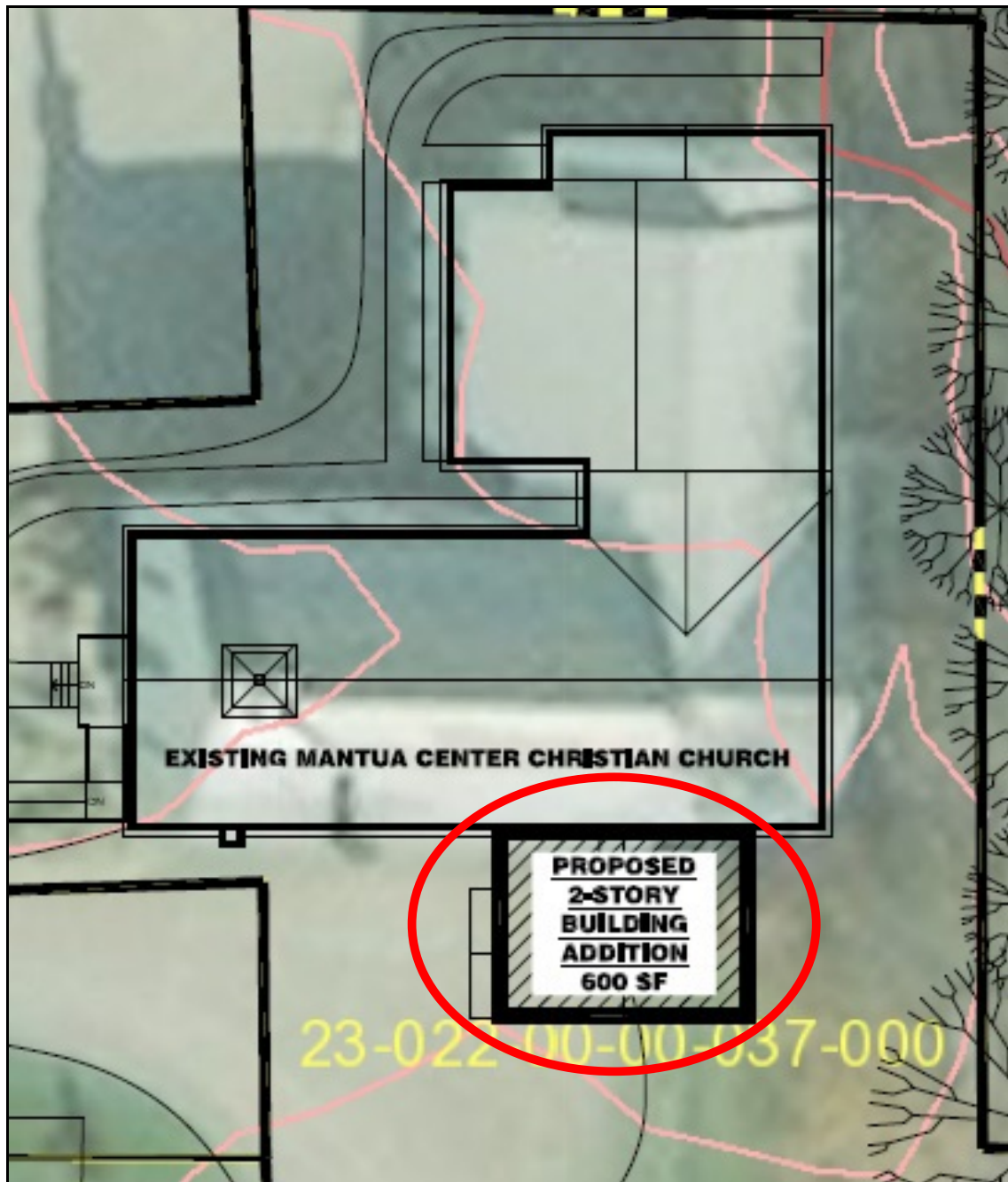


Mantua Center Christian Church

Third Century Plan – Phase Two



A compact addition (22 ft x 29 ft) with an elevator that provides compliant access to all levels of the building with a compliant rest room on each level and upgrades to the current kitchen

Keys to features on the plans

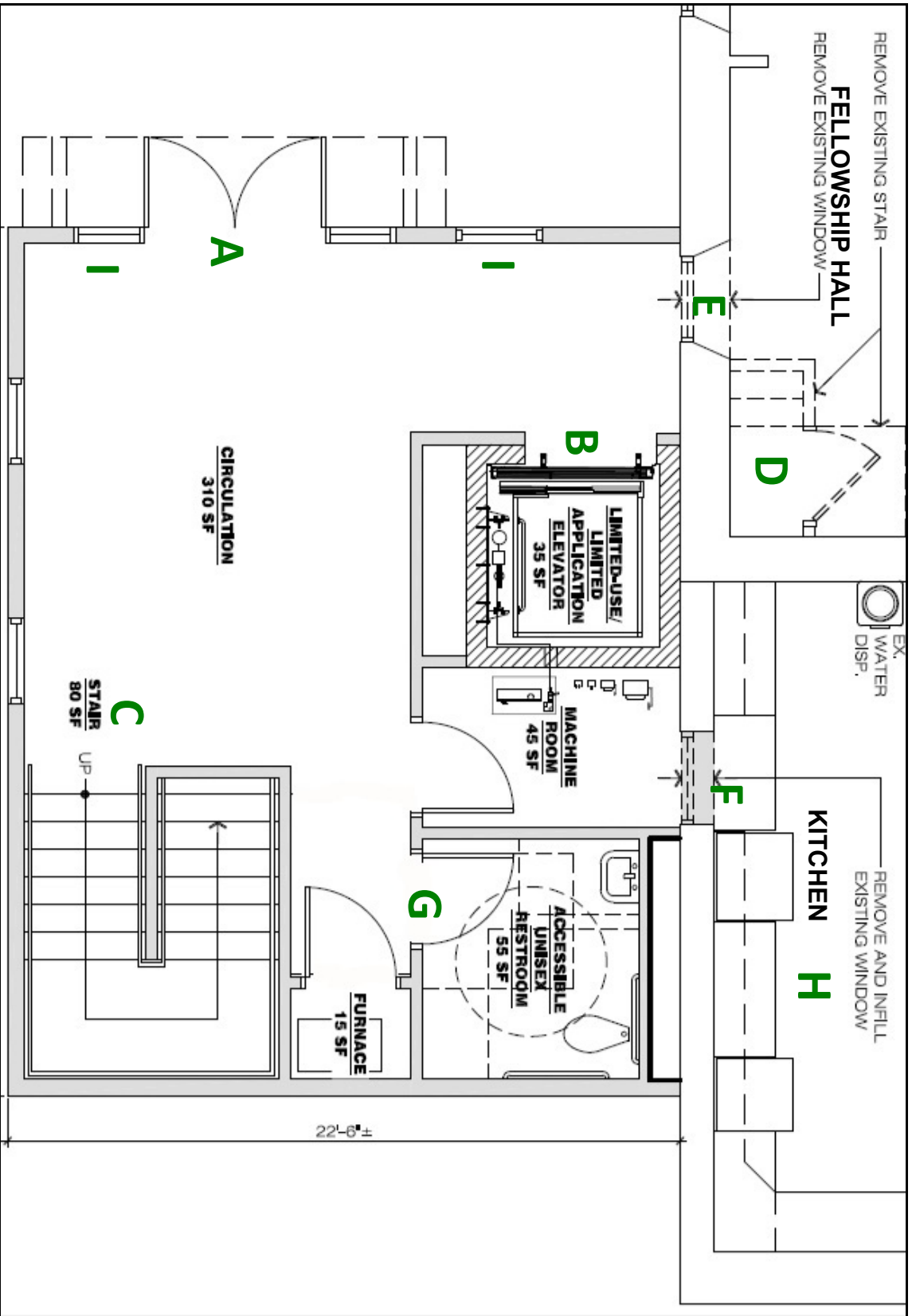
Lower Level

- A** New entrance doors off the south parking lot
- B** Elevator entrance
- C** Stairs up to Sanctuary level
- D** Current stairs at the corner of the Sanctuary to the corner of the Fellowship Hall to be removed
- E** Current window at the corner of the Fellowship Hall to be removed and converted to an open doorway to the Fellowship Hall from the new addition
- F** Current kitchen window to be removed and filled in
- G** New compliant restroom on the lower level
- H** Upgrades to the kitchen, to be determined by members' suggestions
- I** New windows, also along the south side (bottom on the page)

Upper Level

- A** Elevator exit to the Sanctuary level
- B** Elevator exit to the chancel and second floor level (21 inches higher than the Sanctuary level)
- C** Stairs to lower level
- D** New floor infill at the Sanctuary level (where current steps will be removed)
- E** Current window at the corner of the Sanctuary to be removed and converted to an open doorway to the Sanctuary from the new addition
- F** Current window in the upstairs storage room to be removed and converted into an open doorway to the chancel and second floor from the new addition
- G** New compliant restroom on the Sanctuary level
- H** Stairs from the Sanctuary level to the chancel and second floor
- I** New windows, also along the south side (bottom on the page)

Lower Level Plan



Upper Level Plan

